

Our vision is to create a positive, educated and healthy community.



2019 COMMUNITY UPDATE



Eastern Bay Energy Trust Trustees: Kevin Hennessy, David Bulley, Don Lewell, Edwina O'Brien, Aaron Milne and Wade Brown.

Directory

Trust Manager

Rawinia Kamau
Trust Office: 5 Richardson Street, Whakatane
Postal: PO Box 567, Whakatane 3158
Phone: 07 307 0893 | Freephone: 0800 323 800
Fax: 07 307 0896 | Email: ebetrust@ebet.org.nz
www.ebet.org.nz

Chairman

Don Lewell Phone: 07 308 7244 | Mobile: 027 270 9632

Deputy Chairman

Aaron Milne Phone: 021 053 0557

Trustees

Wade Brown Phone: 09 412 2730 | Mobile: 021 530 245
David Bulley Phone 07 312 5874 | Mobile 027 291 0297
Kevin Hennessy Phone: 07 315 6799 | Mobile: 027 625 9379
Edwina O'Brien Phone: 07 323 6553 | Mobile: 021 0831 3757

Treasurer

Paul Wills Phone: 07 308 7155 | Mobile: 027 454 1225

Chairman's Report

The Eastern Bay Energy Trust is a major contributor to our community. The vision of the Eastern Bay Energy Trust is to create a positive, educated and healthy community.

In the 23 years since it was formed the Trust has allocated more than \$39 million to the region.

The Eastern Bay Energy Trust is unique in that it is New Zealand's only charitable energy trust. The Trust is now into our third year of 100% ownership of the Horizon Energy Group.

We are pleased to report that this ownership status continues to unlock further value that is enabling the Eastern Bay Energy Trust to retire debt faster than planned and ultimately deliver greater value to our community.

The Eastern Bay Energy Trust are responsible for maintaining the Trust Fund through sound investment principles to ensure it is sustainable in the long-term.

In the previous 12 months the Eastern Bay Energy Trust can report a \$15m growth in our equity and distributions of \$1.954 million in grants to community organisations and energy-related educational and training initiatives.

The Eastern Bay Energy Trust's funding distribution strategy comprises community events, community development, iconic projects, education and training, and community health, safety and well-being.

As well as funding requests through its reactive funding stream, the Trust takes a proactive approach to supporting the community through its annual strategic planning process. We work hard to capture synergies by collaborating with other funding agencies, and to support iconic community projects.

The Eastern Bay Energy Trust is made up of six trustees who represent the Eastern Bay region. The strength of the Trust is that trustees represent different geographic areas and have diverse skillsets and community involvement.

With a background in the energy industry, including my own consultancy business and two periods as acting Chief Executive for Horizon Energy, I was appointed to the Trust some eight years ago. It has been my privilege to have then been elected and served as the Chair since that time.

This October, an election for the Opotiki Trustee will take place (candidate profiles overleaf). Please take the opportunity to vote for your representative on the Eastern Bay Energy Trust. Historically, the Trustees from Opotiki and Kawerau, where

incumbent Edwina O'Brien has been elected unopposed for a further term, have strong ties to the communities and the many voluntary organisations and people within them.

Thank you to my fellow trustees and staff for their work over the last 12 months. Your time and effort to prudently manage the invested funds, while maintaining a proactive and open approach to future investments and funding requests within the Eastern Bay region is sincerely appreciated.

The support of the Trust reaches into many walks of life within our community and we are proud to support many others to succeed.

Don Lewell
Chairman



Manager's Report 2019

2018/19 was yet another exciting year for the Trust, with the critical success factor being great relationships with fellow funders, key stakeholders and community organisations.

The continuation of relationships with fellow funders such as Bay Trust, meant we were able to bring together funding for some larger projects, for example the outdoor pool cover for the Whakatane Aquatic Centre.

The rollout of the new subsidies from EECA now means that more homes can receive 100% funding for their insulation. Strengthened relationships with key stakeholders such as the District Councils also means that together, we can be more proactive and pre-plan our grant contributions over a multi-year period. An example of this would be funding for BBQ's for public reserves.

The retirement of Louise and Peter Maple, who for a number of years ran our Energy Education in school programmes provided an opportunity for us to review our activities in this space. Dave Dobbin joined us and has worked hands on with school students to build knowledge and skills amongst the students, within the schools that are part of the Whakatane Community of Learning (COL). Sponsorship of energy-related science kits which form the suite of resources that are distributed by REAP through their House of Science programme has been a new investment that will have a wide reach in the region.

Change in Tertiary Fees programmes resulted in a decline in applications for our scholarship programme, but we are optimistic that we will be able to provide support from year 2 and beyond. To the contrary, demand for our apprenticeship programme increased, again – anecdotal evidence suggested that this aligns with the policy change and a focussed marketing effort to engage more vocational careers.

In our effort to make our application process less tenuous, we allocated \$110,000 to 'key investment areas' and one of the outputs of this was that we distributed 11 defibrillators to the EBOP rugby clubs in conjunction with Bay of Plenty Rugby. The main stay of our granting continues to be support for local clubs and organisations with just under \$1 million of grants approved for community projects.

Moving into the next financial year, I'm pleased to have \$2.2million of funding available for distribution and continue to simplify our granting processes in order to provide opportunities for our community to benefit.

Rawinia Kamau
Trust Manager



Dave Dobbin – Community Energy Educator

Bringing a wealth of experience in education, industrial and domestic energy efficiency and conservation, Dave Dobbin joins the Eastern Bay Energy Trust to continue to deliver and develop our Healthy Home, Energy Check and School Energy Education programmes.

Dave has lived in Whakatane for 27 years with his wife Helen and they have two children Sam (23) and Oliver (19).

Dave graduated from Massey University with a Masters Degree in Technology majoring in Industrial Technology and Quality Systems. For 16 years Dave worked within the pulp and paper industry at the Whakatane Mill in quality management, production and managerial roles which saw him coordinate projects that reduced waste, minimised costs and increased productivity.

A decade ago, Dave worked for the Trust as the Energy Options' Engineer designing solar water and space heating solutions, and then became the Operations Manager overseeing Clean Heating and Healthy Homes projects throughout the BOP and South Waikato regions.

For the last 10 years Dave has been a Technology Teacher at Trident High School enjoying the "opportunity to make a real difference to our local community in preparing our youth for technological and engineering careers".

Over the past six years, Trident reduced their energy costs by 42%, which Dave is proud to have achieved through engaging students in their educational learning journeys.

Dave was awarded the National Excellence in Teaching Award (NEiTA) in 2016 for his achievements with students in the Renewable Energy, Energy Efficiency and Conservation realms; and EECA Energy Management Awards (2016) and the BOP Chamber of Commerce (2017) and Horizon Business Excellence Awards (2018).

Dave sees the Community Energy Educator role as an opportunity to expand energy education throughout the wider Eastern Bay region and to help people within our communities.

"The Trust has been a key contributor to our school's energy programmes and now I have the opportunity to play a key role in delivering that knowledge, support and benefit to other schools and homes within our district."

Dave looks forward to "piloting innovative approaches to help our communities to identify ways to save power and create warmer, drier and healthier homes".

Dave Dobbin
Energy Educator



The Trust's Investment Strategy

- Approximately 40% of the Trust's net income will be placed in investments that provide a fair and reasonable return.
- The trustees are responsible for maintaining the Trust Fund and are committed to a path of diversification of the Trust's investments in accordance with sound investment principles, to ensure that the Trust Fund is sustainable in the long term.
- The trustees are committed to managing the Trust's investment portfolio to maintain and grow its value, while balancing risk and return.
- The trustees will, where appropriate, take independent investment advice.
- The Trust has the risk profile of a moderate investor with a low to medium risk. The trustees prefer to have a higher allocation of income assets than growth assets. In achieving the capital growth required the trustees are not prepared to experience significant fluctuations in investment returns.
- The investment strategy of the Trust is to develop a moderate investment portfolio.
- Local investments will be considered provided they meet the risk profile.
- When considering investments, the trustees should be cognizant of the principles of diversification, in line with the Trust's investment profile.
- The Horizon investment is guided by a Statement of Corporate Intent (SCI).

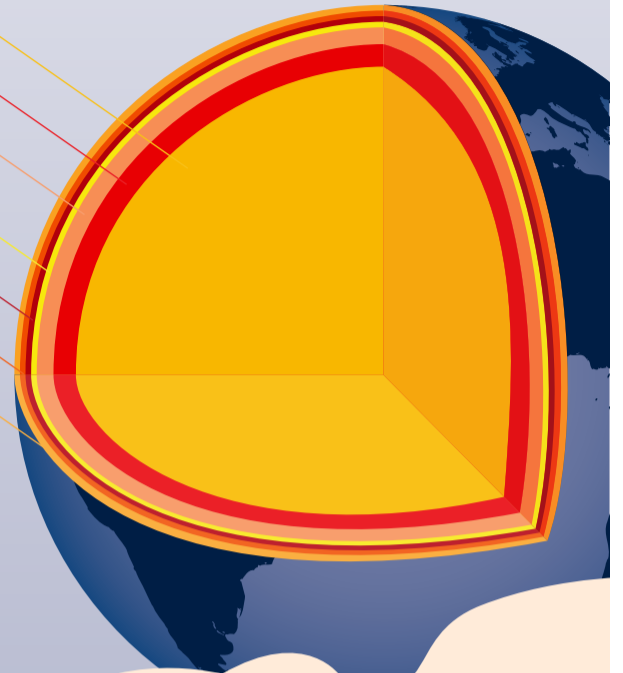
Investment Portfolio

Horizon Energy Distribution Ltd	93.54%	\$110,212,008
ASB Bond Portfolio	1.72%	\$2,021,512
Craigs Share Portfolio	2.51%	\$2,955,543
Opotiki Packing and Cool Storage Ltd ^{OPAC}	0.50%	\$589,956
OTK Orchards Ltd	0.90%	\$1,060,000
CT Scanner	0.20%	\$230,161
DEL Richardson Street	0.64%	\$750,000

(Diagram is indicative only, not accurate or to scale.)

Total Investment
\$117,819,180

As at 31st March 2019



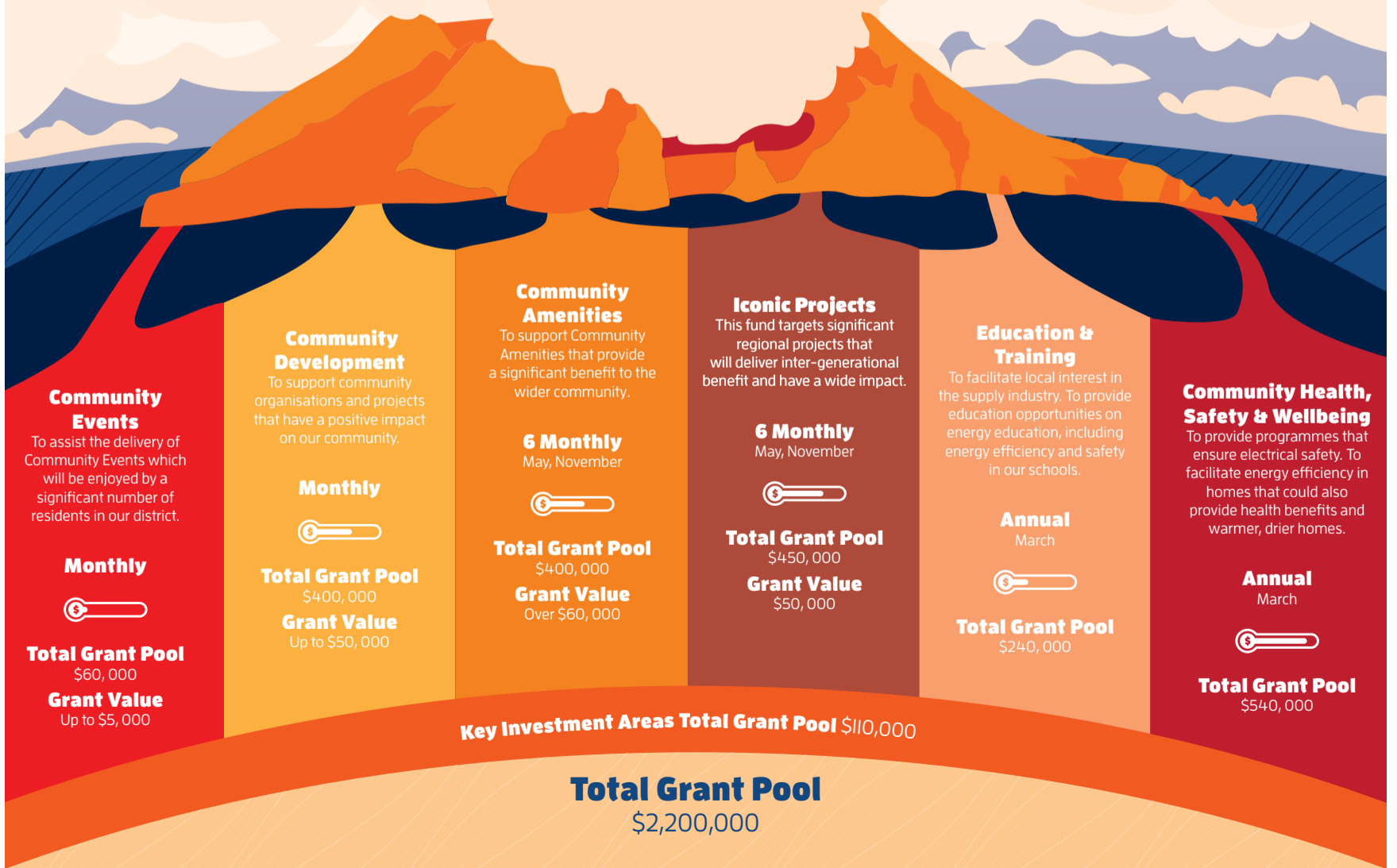
Funding Distribution Chart

Vision

To create a positive, educated & healthy community

Mission

Funding through energy



Schedule of Distributions for Energy Related Purposes 2018 -2019

Reactive Community Grants Initiated by the Community

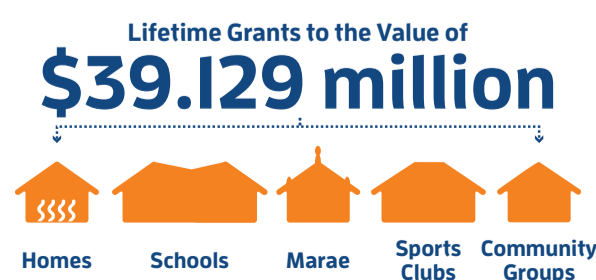
Community Amenities	Allandale School	BBQ, lighting, electrical wiring	26,332.00	
	Opotiki District Council	Install & dismantle LED Christmas lighting	8,860.00	
	Whakatane District Community Arts Council	Washing machine	304.35	
	Whakatane District Council	Port Ohope Wharf Development	100,000.00	
	Whakatane District Council	BBQ at Mahy Reserve	16,586.68	
Community Events	Whakatane District Council	3 phase power - Whakatane Heads	28,242.00	
	Eastern Bay Chamber of Commerce	Projection, sound & lighting -Horizon Business Excellence Awards	5,000.00	
	Edgecumbe Blue Light Ventures Inc.	Sound system hire	2,800.00	
	Have a Heart Charitable Trust	Yeah Nah It's Not Ok Song Quest	4,720.04	
	Kawerau District Council	WoodFest 2018 - sound system hire	5,000.00	
	Kawerau District Council	King of the Mountain Race 2018 - sound & audio visual equipment	5,000.00	
	Kawerau District Council	Christmas in the Park	5,000.00	
	Life Education Trust EBOP	Sound & lighting hire	4,284.01	
	Matata Blue Light Ventures Inc.	Sound system hire	3,130.44	
	Opotiki District Council	A & P Show	1,250.00	
	Opotiki District Council	Lantern Festival 2018	4,910.00	
	Opotiki District Council	Food market and movie night	1,250.00	
	Opotiki District Council	Movie night	800.00	
	Te Parahia Trust	Sound & lighting system hire	4,500.00	
	The Light Party	Sound system hire	1,331.10	
	The National Woodskills Trust	Spotlighting for the stands - WoodFest 2018	830.00	
	Whakatane District Community Arts Council	Summer events calendar	2,500.00	
	Whakatane District Council	Wild Food Challenge	500.00	
	Whakatane District Youth Council	Screen & video projection & sound equipment hireage	305.78	
	Whakatane Intermediate School	Rangitaiki Kapa Haka Festival 2018	1,000.00	
	Whakatane RSA Inc	Armistice Day Commemorations	890.00	
	Whakatane Touch Association Charitable Trust	Sound system hire	3,498.63	
	Te Reo Iirangi o Te Manuka Tutahi Trust	Whakatane Seafood Festival	1,500.00	
	Community Development	Allandale School	Electrical wiring & lighting	18,650.00
		Apanui School	Pool pump, filter & pool cover	19,197.35
		Ashbrook School	Basketball court lighting for covered area	20,020.87
		Budget Advisory Service Rangitaiki Inc.	Heat pumps, rust proofing, LED lighting, hot water system	12,236.00
Coastguard Opotiki Inc.		Heat pump & LED touch screen	19,268.26	
EBOP Rugby Sub-Union		Stove, fridge & pie warmer	2,416.96	
Edgecumbe Squash & Tennis Club Inc.		Internal & external lighting, hot water heating	43,007.40	
Hospice Eastern Bay of Plenty		Electric lazy boy chairs, syringe drivers, nebulisers	14,962.00	
Matata Bluelight Ventures Inc		Heat pump, floodlights, smart screen, speaker & stand	8,691.06	
Murupara Rugby & Sports Club Inc.		Training lights, heat pumps, dishwasher, gas range with electric convection oven, fridge, rangehood, water boiler, microwave	68,234.99	
Netball Whakatane Cenre Inc.		LED netball court lighting, internal & external bulkhead lights, 2 heat pumps	24,717.00	
Ngai Te Rangihouhiri Marae II Reservation Trust		Kitchen appliances	69,014.72	
Ngati Umutahi Marae Trust		Oven shelves	867.25	
Ohope Chartered Club		Alarm & fire alarm upgrade & lighting - additional funding	2,654.41	
Opotiki Art Society Incorporated		Lighting and heat pumps	16,463.33	
Opotiki Community Childcare Centre		Electrical wiring, gas fitting, insulation kitchen appliances, rangehood, washing machine	13,320.53	
Order of St John		Heat pump for Whakatane & Edgecumbe stations	5,100.00	
Otakiri School		Laser projector and screen	4,285.00	
Rautahi Community Marae		Combi oven & exhaust hood, electrical work, LED lights, sensor lights & hand driers	66,529.79	
St David Edgecumbe Presbyterian Church - Hall		Interior & exterior lighting, heat pumps, kitchen appliances	51,900.00	
St Gerard Catholic Church		Heat pumps & boil and brew	15,249.00	
The Clothing Project		Insulation and heat pumps	17,684.32	
Whakatane Athletic & Harrier Club Inc.		Exterior lighting	17,093.00	
Whakatane District Council		Electronic scoreboard - War Memorial Hall	23,370.48	
Whakatane District Council		Electronic scoreboard & electricity supply - Dunderdale Park	16,497.00	
Whakatane Golf Club		2 dishwashers, convection oven, gas fryer, chilled food cabinet, 2 chillers	28,161.63	
Whakatane Historical Society Scholarship Trust		Camcorder, audio recorders, associated equipment	11,561.89	
Whakatane Lawn Tennis Club		Heat pump, insulation, lighting, kitchen appliances, hot water boiler, security camera	21,500.00	
Whakatane Racing Club		Electrical upgrade & security lighting	25,352.81	
Whakatane Surf Lifesaving Club Inc.		Gas califont	6,345.02	
Whakatane Volunteer Coastguard		Boatshed lighting & training room smart board	12,544.35	
Total Reactive Community Grants			917,221.45	

Proactive Distributions Initiated by the Trust

Community Health, Safety and Wellbeing	Advocacy services	5,000.00
	EnergyChecks and Energy Audits 2018-2019	10,000.00
	Investigation of generation & co-generation opportunities	16,500.00
	Retrofit insulation Healthy Homes 2018-2019	376,000.00
	Safe & Smart Packs 2018-2019	8,500.00
	Undergrounding 2018-2019	100,000.00
	EV Charger - Murupara	41,500.00
Iconic Projects	Whakatane District Council - Pool cover	400,000.00
	Apprenticeship programme 2018-2019	30,000.00
Community Education	Energy Education programme 2018-2019	133,685.00
	Renewable Energy Project	4,500.00
	Scholarship programme 2018-2019	51,815.00
	Taster Course 2018	20,000.00
Discovery	Defibrillators (23)	34,535.00
Total Proactive Distributions		1,232,035

Total Funds Distributed by the Trust

Reactive	917,221.45
Proactive	1,232,035
Subtotal	2,149,256.45
Less Returned to Grant Pool	-194,378.28
Total	1,954,878



Trustee Candidate Profiles

The Trust has a total of six trustees and an election is held every second year for the four elected trustees.

This year an election is in process for one trustee from the Opotiki District Council area and one trustee from the Kawerau District Council area.

When nominations closed at 12 noon on Friday, 9 August 2019, three nominations had been received. There was one nomination for the Kawerau District Council area, which was incumbent trustee Edwina O'Brien, who was declared elected unopposed.

The candidates for the Opotiki District Council area are Kevin Hennessy and Barry Hill. An election will be held for the one position on the Trust on Tuesday, 1 October 2019.



Kevin Hennessy

"As the current Opotiki trustee on the Eastern Bay Energy Trust I am more than happy to put my name forward for re-election this year.

I have held this position for eighteen years and in that time I have been both Deputy and Chairman of the

Trust. I have extensive knowledge of the workings and history of the Trust including the Trust Deed.

I am Opotiki born and bred and have been in business here for over 40 years.

I am proud to have served our community on the Trust over the years and with your support I hope to continue for the betterment of Opotiki."



Barry Hill

"I have the skills plus the boardroom competencies to provide excellent support as a trustee for the Eastern Bay Energy Trust.

During my long career in New Zealand and overseas I have been a company director, NZ Maori Culture group President in Australia, board member

of several body corporations and sporting clubs.

Currently working as the manager for a company providing electrical condition monitoring services to most of the electric generating and reticulation providers around New Zealand Barry has a unique insight

into the business that EBET is. This work will add value as an EBET Trustee.

I bring commitment and openness along with the ability to cooperate with board members in a collaborative manner to ensure the best outcome for EBET."

Proactive Project Highlights

EnergyCheck

The Trust's free EnergyCheck programme is designed to provide Eastern Bay householders and schools with a full report on all of the energy aspects of their homes and facilities. The EnergyCheck includes recommendations to save power and money by improve their home's or school's energy efficiency.



Healthy Homes EBOP

The Eastern Bay Energy Trust continues to support the retrofit insulation programme which has been now running for two decades. The retrofit insulation programme continues to be one of the largest projects that the Trust is involved with which is in line with the vision to create a healthier community.

The Trust's total contribution over the past 20 years into retrofit insulation of Eastern Bay homes

totals more than \$10.3 million which continues to leverage co-funding from the Energy Efficiency & Conservation Authority (EECA).

The Trust's retrofit insulation work in the Eastern Bay continues to be contracted to Smart Energy Solutions (SES). During the 2018-2019 year, the Trust invested \$376,000 to insulate hundreds of homes in the Eastern Bay.



Energy Innovation On Show

Schools in the Eastern Bay of Plenty will be getting the chance to see first-hand, innovative, new technology that sees electric vehicles supplying electricity to homes and businesses.

The Vehicle to Home ("V2H") unit essentially transforms electric vehicles into mobile batteries, capable of transporting energy wherever it's needed – be it homes, businesses or appliances, opening up exciting opportunities for customer self-sustainability and network resilience.

Electric vehicle use is on the rise in New Zealand and has just received a boost from the government which has announced a proposed incentive scheme to push Kiwis into cleaner, low-emission vehicles.

The "feebate" scheme, coming into force in 2021, would lower the cost of electric vehicles, hybrids and lower emission cars, while adding fees onto the cost of high-emissions vehicles like utes or SUVs.

The V2H units enable an average household to be powered for up to 10-12 hours with one electric vehicle with a 30kWh battery capacity.

New Zealand is well placed to benefit from



electric vehicles and technology such as V2H. More than 80 percent of electricity is generated from renewable sources and there is enough supply for widespread adoption of EVs. Even if every light vehicle was electric, there is sufficient generation capacity to charge these provided the majority are charged at off-peak times.

The V2H unit will be part of the Eastern Bay Energy Trust's Energy Education programme and will also be showcased at various events over the next 12 months. For a list of those events,

please visit horizonnetworks.nz.

V2H is being introduced in the Bay of Plenty thanks to a partnership between Vector and Horizon Networks.

"We look forward to working with Vector and others in the electricity sector to showcase what the future may hold for our customers," says Mr Caudwell.

Future proofing Whakatane's Energy Requirements

The Kope substation is a critical asset for Horizon Networks as it supplies the entire Whakatane township – both to residential and business customers.

The substation, located in the suburb of Kopeopeo, provides electricity to more than 20% of the entire distribution network in the Eastern Bay of Plenty.

Whilst Horizon Networks has factored sufficient redundancy in its systems to supply the township from other sources, it is vital that the Kope substation continues to be safe, reliable, and meet customers' expectations both now and into the future.

Over the past year, old outdoor 33,000V assets have been removed and replaced with new indoor switchgear, inside a purpose-built new building. Due to the location of this substation, a block wall around the substation yard has also been installed to improve safety and security.



The new infrastructure will minimise the site's exposure to adverse weather while also providing more capacity to support future load growth. With the expansion of the Whakatane CBD, along with the surge in use of electric vehicles, the upgrade means Horizon Networks is now well positioned to respond to these changes.

The 33,000V switchgear upgrade at Kope also provides the infrastructure to supply an additional substation in Whakatane CBD should the network require it. The total cost for this project has been just over \$2 M.

PROUD TO BE

100% LOCALLY OWNED.

hegroup.nz



@Horizon Energy Group



HEG
Horizon Energy Group

Reactive Community Grant Highlights



District Council Projects

Supporting regional assets and infrastructure is one of the Trust's strategic aims and in the previous 12 months the Trust continued its investment in this area across the Eastern Bay District.

One project was the co-funding of the upgrade of the Whakatane Airport airfield runway lighting in conjunction with the Whakatane District Council and the Ministry of

Transport. The trustees (pictured at the runway) saw the \$175,000 project as an opportunity to support an important regional asset, with the ongoing operational and capital costs covered by Whakatane District Council.

In Opotiki, the Trust co-funded undergrounding of power lines and continued supporting iconic events such as the Christmas in the Park.

Sport and Recreation

The Trust invested into a wide variety of sporting organisations last year including athletics, netball, rugby, touch, squash, tennis, surf lifesaving and racing. The Trust views sports clubs as a key part of the community infrastructure. Support included

funding to the Edgecumbe Squash and Tennis Club for internal and external lighting and heating, the Eastern Bay Rugby Sub-Union for kitchen appliances (pictured) and the Whakatane Lawn Tennis Club for heating and lighting upgrades.



Community Events

Events are an important part of the community and the Trust funds a number of summer and winter events throughout the Eastern Bay of Plenty including the RSA's Armistice Day celebrations and the 2018 Horizon Business Excellence Awards. Among other events, the Trust supported Opotiki with their

A&P Show, the Lantern Festival (pictured) and Food Market and Movie Nights. The inaugural Whakatane Seafood Festival and the annual Have a Heart Charitable Trust 'Yeah Nah It's Not OK' Song Quest were also supported by the Trust.

Community Organisations

A wide variety of community organisations were supported last financial year. These ranged from the Opotiki and Whakatane Volunteer Coastguard, the Edgecumbe and Whakatane Order of St John, Kawerau's Rautahi Marae to schools and churches. One of the key projects the Trust

supported was the transformation of Allandale School's outdoor space into a multi-use play and learning space. The Trust also funded heating for the award-winning Eastern Bay of Plenty Brass Band (pictured) clubrooms which are now both warmer and drier.



Industry Training Programmes

The Eastern Bay Energy Trust has a major focus on industry education and training. The industry training programme includes scholarships for energy-related study at university and polytechnic level, supporting local contractors to create apprenticeship positions, and an annual electricity supply taster course for senior secondary school students.



Electrical Taster Course

The week-long Electrical Taster Course is for year 12 and 13 students who are considering a career in the electrical industry.

The annual Taster Course provides secondary students with a good overview of the range of careers available in the electrical sector.

In 2018, 10 students representing Eastern Bay secondary schools took part in the course, which was held at Tarawera High School during the term three school holidays.

Students learned how the New Zealand electrical supply industry works, what courses and training pathways are available and completed a range of site visits including to the Kawerau geothermal plant, the Huntly Power Station and the Waikato Institute of Technology.

The course is organised and co-funded by the Eastern Bay Energy Trust and Connexis.

Apprentice Training Support

The Trust continues its support of electrical apprentices working for businesses throughout the Eastern Bay.

The Trust offers financial support by paying the industry contribution, which can vary between \$36 and \$42 per week, depending on whether apprentices have completed the pre-trade training course. The Trust also pays the employer's contribution in a bid to increase the number of qualified electrical workers in the industry.

In the past 14 years, the Trust has provided more than \$310,000 funding to assist electrical apprentices, (pictured).

A nationally recognised qualification, an electrical apprenticeship comprises practical work and theory classroom sessions and exams. It usually takes three a half years to complete the New Zealand Certificate in Electrical Engineering Theory and Practice (Trade) level 4. The final step is becoming a registered and licensed electrician.



Energy Education Programme

Energy education continues to be delivered to schools in the Eastern Bay through the Trust's Community Energy Education programme. The programme has been expanded to include energy education within the community.

The education programme focuses on organisations such as schools and people in their homes reducing

costs while maintaining a high quality of health and well-being.

The programme aims to share learnings from one organisation to another. The future focus is to pilot innovative approaches to help communities save power and create warmer, drier and healthier homes.

Contents

Directory	1
Chairman's Report / Manager's Report	2
Investment Strategy / Funding Distribution Chart	3
Schedule of Distributions 2018 - 2019	4
Distribution Graphs / Proactive Projects Highlights	5
Horizon Energy Project Highlights	6
Reactive Community Grants / Highlights	7
Industry Training Programme / Scholarship Programme	8

Copies

Copies of the annual report and financial statements are available upon request.

To order a copy please contact us on our freephone number, or visit our website www.ebet.org.nz

Advisors

Legal Sharp Tudhope | Tauranga
Legal Osborne Attewell Clews | Whakatane
Financial & Business Deloitte | Wellington
Accountants Arrow Accountants | Whakatane
Auditors KPMG | Tauranga
Bankers ASB Bank | Tauranga